

**Internal Camera. Specification**

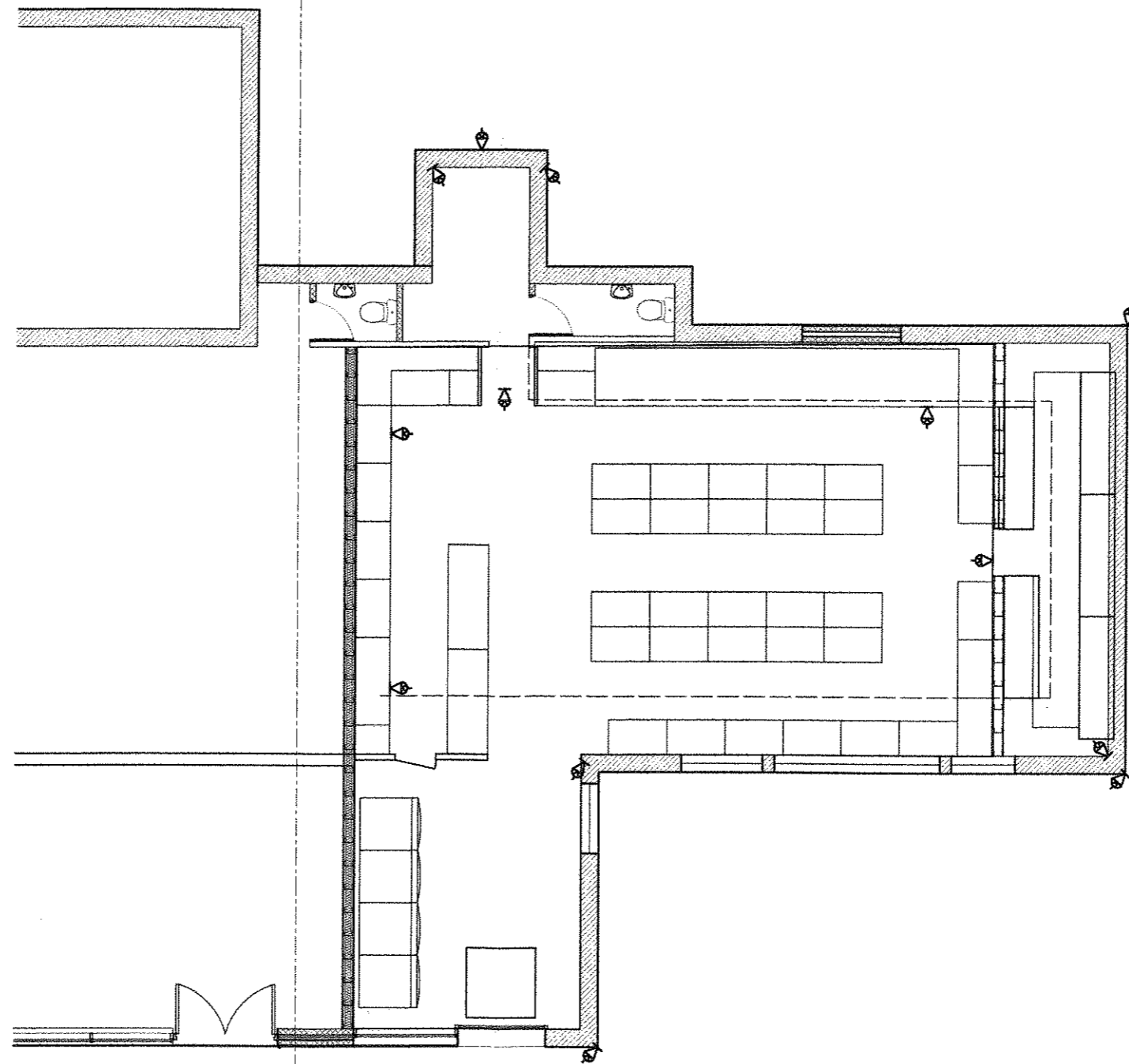
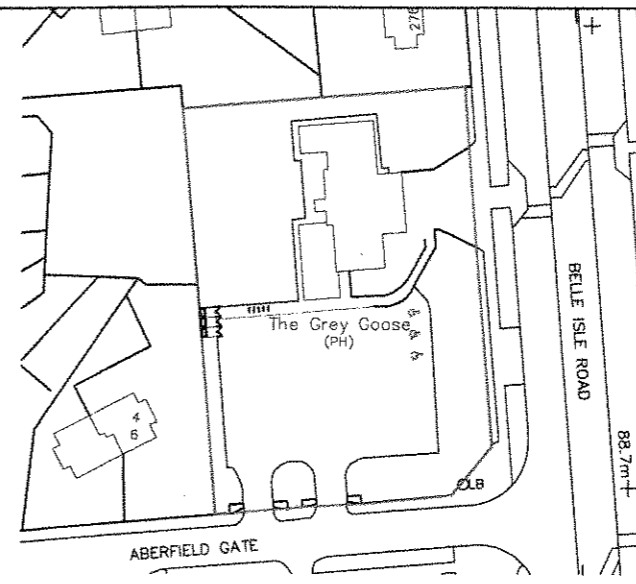
Model Twilight FLD  
 Image Processor Sony HQ1  
 Imaging device Sony 1/3" CCD  
 Pixels PAL:795x596  
 Horizontal Resolution 540TVL  
 TV System PAL  
 Level Synchronization Freq. PAL:15.625khz

**External Camera. Specification**

Model Twilight VFD  
 Image Processor Sony HQ1  
 Imaging device Sony 1/3" CCD  
 Pixels PAL:795x596  
 Horizontal Resolution 540TVL  
 TV System PAL  
 Level Synchronization Freq. PAL:15.625khz

**DVR Specification**

**Function.**  
 No. of Cameras 16  
 Split display mode 1, 4, 9, 16  
 Image output Dynamic video display  
 Multiplex Quadruplex (live, Record, Play back, Ethernet).  
**Record**  
 Resolution NTSC: 640x480 PAL:640x512  
 FPS 240 fps (NTSC), 200fps (PAL)  
 Recording quality 5 Levels  
 Average compression rate More than 300:1  
 Motion recording Yes.  
**Playback**  
 Search mode File search, event search, time frame search.  
 Search speed Date, hour, min, sec, frame, pause.  
**HDD**  
 Internal SATA bay 2  
 Size of hard drive 120GB - 1000GB  
 USB flash drive yes  
 DVDRW yes  
 Jpeg photo capture yes  
**Other items**  
 2 numbers, 15" monitor with brackets to enable them to be wall mounted.  
 2 number, optic laser mouse  
 2 number 20cmx30cm signs with "CCTV recording"



Notes  
 This drawing is copyright and must not be reproduced without permission  
 Do not scale this drawing

REV	DATE	TITLE



KASA-DS  
 334 Dewsbury Road  
 Leeds  
 LS11 7DJ  
 Tel: 0113 277 57 58  
 Fax: 0113 277 56 30  
 Email:  
 info@kasa-ds.com

This is K.A.S.A.'s interpretation of the site requirements. It is the contractors responsibility to check all site dimensions and buildability of details shown. KASA are not responsible for any variations that occur through design or on site surveys and should be appointed to the contract accordingly.

Client: **KASA Belle Isle**

Project: Grey Goose, 278 Belle Isle Road, Leeds, LS10 3QJ

Title: **Proposed CCTV layout**

Drawing No. **P7** Rev. **-**

Project No. **KASA3** Date **June 2010** Checked: **KB**

Dr: **A. Bashir** Scale: **1:100, @ A3**